

TECHNICAL DATA SHEET



Type	DucoGrille Classic F 45HP	
DESCRIPTION	Window louvre, applicable in aluminium, PVC or timber windows. High airflow	
SHAPE OF BLADE	45HP	
PITCH	50 mm	
FRAME WIDTH	39 mm	
GLASS THICKNESS	28 mm	
FRAME DEPTH	77 mm	
MIN. DIMENSIONS	Width 250mm, Height 250mm. Exception on request.	
REACTION TO FIRE	If version with standard plastic clips : D-s2,d0 (EN13501-1) If version with metal clips (optional) : A2-s1,d0 (EN 13501-1)	
MESH	<ul style="list-style-type: none"> - standard with insectmesh 2.3 x 2.3 mm - optional without mesh - optional with bird mesh 6 x 6 mm - optional with bird mesh 20 x 20 mm 	
DRIP TRAY PROFILE	standard without drip tray, drainage via frame profile	
MATERIAL	Aluminium : EN AW-6063 T66 (EN 573-3) Profile thickness : min. 1,5mm Thermoplastic parts : Clips Polyamide PA 6,6 -reinforced with glass fibre Metal parts : Clips Zamak Electrophoresis blackened	
SURFACE TREATMENT	<ul style="list-style-type: none"> - standard aluminium anodised (15-20µm) according Qualanod - polyester powder coated (60-80µm) according Qualicoat Seaside type A - specific RAL codes and/or textured paint on request 	
VISUAL FREE AREA	70%	
PHYSICAL FREE AREA	60%	
AIR FLOW DATA	(EN13030)	standard
	Ce	0,341
	K-factor intake	8,60
	Cd	0,365
	K-factor exhaust	7,51
WATER RESISTANCE	(EN13030)	standard
	v = 0 m/s	C
	v = 0,5 m/s	C
	v = 1 m/s	D
	v = 1.5 m/s	D
	v = 2 m/s	D
	v = 2.5 m/s	D
	v = 3 m/s	D
v = 3,5 m/s	D	

3

2

1

D

D

C

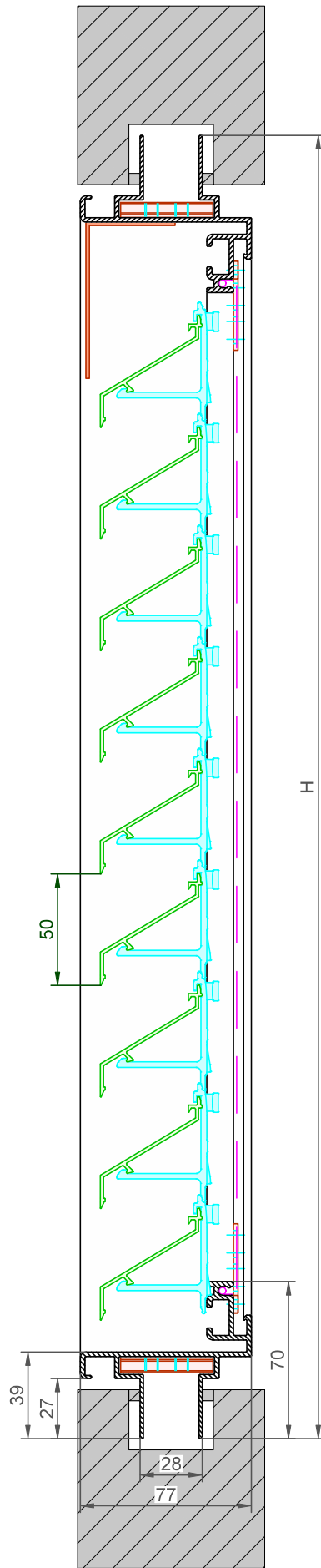
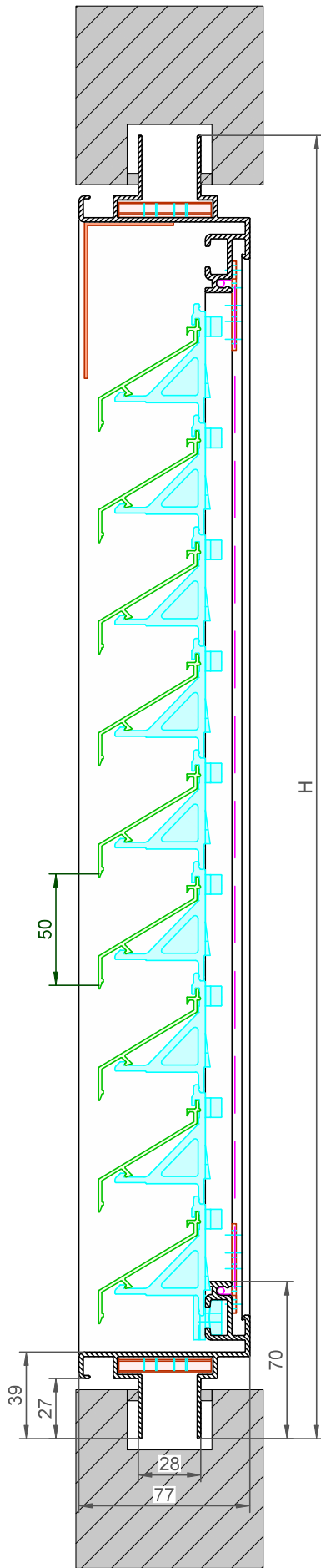
C

B

B

A

A



DucoGrille Classic **F45HP**

Datum : 01/03/2023

Schaal : 1:2

DUCO
Ventilation & Sun Control

Tol. : ISO 2768-mK

Getekend : LNT/JHX

Mat. :

Ref nr. :

Formaat : A3



omtrek

gewicht

lakoppervl.

Tekening nr. :

DGC-F45HP

Bedrijvenlaan 2 - 8630 VEURNE
 tel. 0032-58/330066 - fax.0032-58/330067
 email: info@duco.eu www.duco.eu
 Deze tekening is eigendom van Duco Projects en mag niet gekopieerd
 noch getoond worden aan derden zonder schriftelijke toestemming

Available with : • Standard plastic clip (left)
 • Metal clip (right)

3

2

1