

TECHNICAL DATA SHEET



Type	DucoGrille Classic N 50Z + options	
DESCRIPTION	Louvre "build-in" wall grille, no flange	
SHAPE OF BLADE	50Z	
PITCH	65 mm	
EQUAL LEG OUTER FRAME	0 mm	
INSTALLATION DEPTH	65 mm	
FRAME DEPTH	65 mm	
MIN. DIMENSIONS	Width 300mm, Height 300mm. Exception on request.	
MESH	- standard with insectmesh 2.3 x 2.3 mm	
OPTIONS	incl. extra drip tray on the back of the frame test result situation installed in wall	
MATERIAL	Aluminium :	EN AW-6063 T66 (EN 573-3) Profile thickness : min. 1,5mm
	Thermoplastic parts :	Clips Polyamide PA 6,6 -reinforced with glass fibre
SURFACE TREATMENT	- standard aluminium anodised (15-20µm) according Qualanod - polyester powder coated (60-80µm) according Qualicoat Seaside type A - specific RAL codes and/or textured paint on request	
VISUAL FREE AREA	75%	
PHYSICAL FREE AREA	47%	
AIR FLOW DATA	(EN13030)	+ options
	Ce	0,207
	K-factor intake	23,34
	Cd	0,266
	K-factor exhaust	14,13
WATER RESISTANCE	(EN13030)	+ options
	v = 0 m/s	A
	v = 0,5 m/s	B
	v = 1 m/s	B
	v = 1.5 m/s	C
	v = 2 m/s	C
	v = 2.5 m/s	D
	v = 3 m/s	D
	v = 3,5 m/s	D

3

2

1

D

D

C

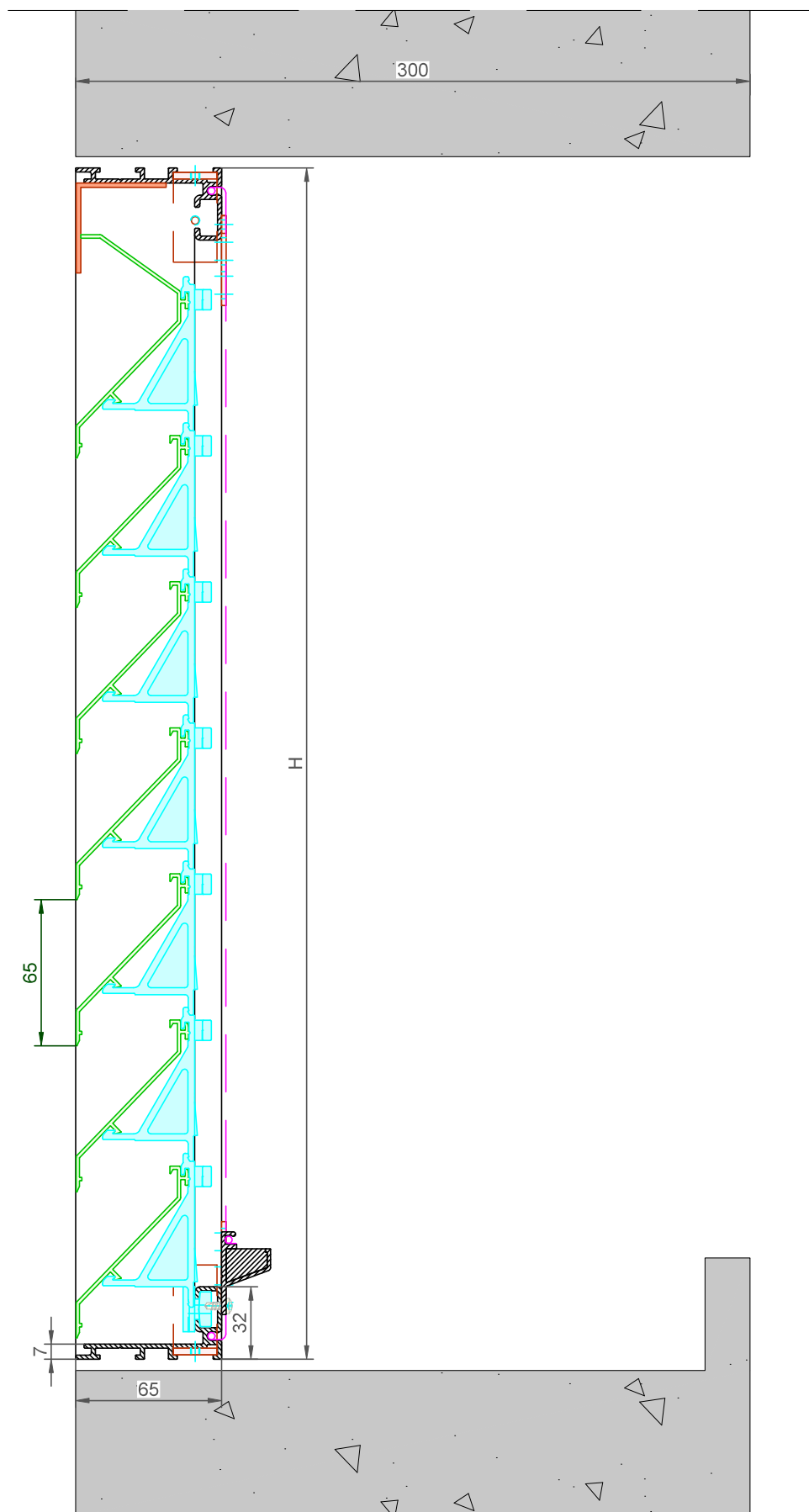
C

B

B

A

A



DucoGrille Classic **N50Z-65 + Options**

Datum : 29/08/2022

Schaal : 1:2

DUCO
Ventilation & Sun Control

Bedrijvenlaan 2 - 8630 VEURNE
tel. 0032-58/330066 - fax.0032-58/330067
email: info@duco.eu www.duco.eu

Deze tekening is eigendom van Duco Projects en mag niet gekopieerd
noch getoond worden aan derden zonder schriftelijke toestemming

Tol. : ISO 2768-mK

Getekend : SDN/JHX

Mat. :

Ref nr. :

Formaat : A3



omtrek

gewicht

lakoppervl.

Tekening nr. :

mm

kg/m

dm²/m

DGC-N50Z-65 + Options

3

2

1