

TECHNICAL DATA SHEET



Type	DucoGrille Classic N 50Z																			
DESCRIPTION	Louvre "build-in" wall grille, no flange																			
SHAPE OF BLADE	50Z																			
PITCH	65 mm																			
EQUAL LEG OUTER FRAME	0 mm																			
INSTALLATION DEPTH	65 mm																			
FRAME DEPTH	65 mm																			
MIN. DIMENSIONS	Width 300mm, Height 300mm. Exception on request.																			
MESH	<ul style="list-style-type: none"> - standard with insectmesh 2.3 x 2.3 mm - optional without mesh - optional with bird mesh 6 x 6 mm - optional with bird mesh 20 x 20 mm 																			
DRIP TRAY PROFILE	extra drip tray on the back of the frame possible as an option																			
MATERIAL	Aluminium : EN AW-6063 T66 (EN 573-3) Profile thickness : min. 1,5mm Thermoplastic parts : Clips Polyamide PA 6,6 -reinforced with glass fibre																			
SURFACE TREATMENT	<ul style="list-style-type: none"> - standard aluminium anodised (15-20µm) according Qualanod - polyester powder coated (60-80µm) according Qualicoat Seaside type A - specific RAL codes and/or textured paint on request 																			
VISUAL FREE AREA	75%																			
PHYSICAL FREE AREA	47%																			
AIR FLOW DATA	<table border="1"> <thead> <tr> <th>(EN13030)</th> <th>standard</th> </tr> </thead> <tbody> <tr> <td>Ce</td> <td>0,232</td> </tr> <tr> <td>K-factor intake</td> <td>18,58</td> </tr> <tr> <td>Cd</td> <td>0,263</td> </tr> <tr> <td>K-factor exhaust</td> <td>14,46</td> </tr> </tbody> </table>		(EN13030)	standard	Ce	0,232	K-factor intake	18,58	Cd	0,263	K-factor exhaust	14,46								
(EN13030)	standard																			
Ce	0,232																			
K-factor intake	18,58																			
Cd	0,263																			
K-factor exhaust	14,46																			
WATER RESISTANCE	<table border="1"> <thead> <tr> <th>(EN13030)</th> <th>standard</th> </tr> </thead> <tbody> <tr> <td>v = 0 m/s</td> <td>C</td> </tr> <tr> <td>v = 0,5 m/s</td> <td>C</td> </tr> <tr> <td>v = 1 m/s</td> <td>C</td> </tr> <tr> <td>v = 1.5 m/s</td> <td>D</td> </tr> <tr> <td>v = 2 m/s</td> <td>D</td> </tr> <tr> <td>v = 2.5 m/s</td> <td>D</td> </tr> <tr> <td>v = 3 m/s</td> <td>D</td> </tr> <tr> <td>v = 3,5 m/s</td> <td>D</td> </tr> </tbody> </table>		(EN13030)	standard	v = 0 m/s	C	v = 0,5 m/s	C	v = 1 m/s	C	v = 1.5 m/s	D	v = 2 m/s	D	v = 2.5 m/s	D	v = 3 m/s	D	v = 3,5 m/s	D
(EN13030)	standard																			
v = 0 m/s	C																			
v = 0,5 m/s	C																			
v = 1 m/s	C																			
v = 1.5 m/s	D																			
v = 2 m/s	D																			
v = 2.5 m/s	D																			
v = 3 m/s	D																			
v = 3,5 m/s	D																			

3

2

1

D

D

C

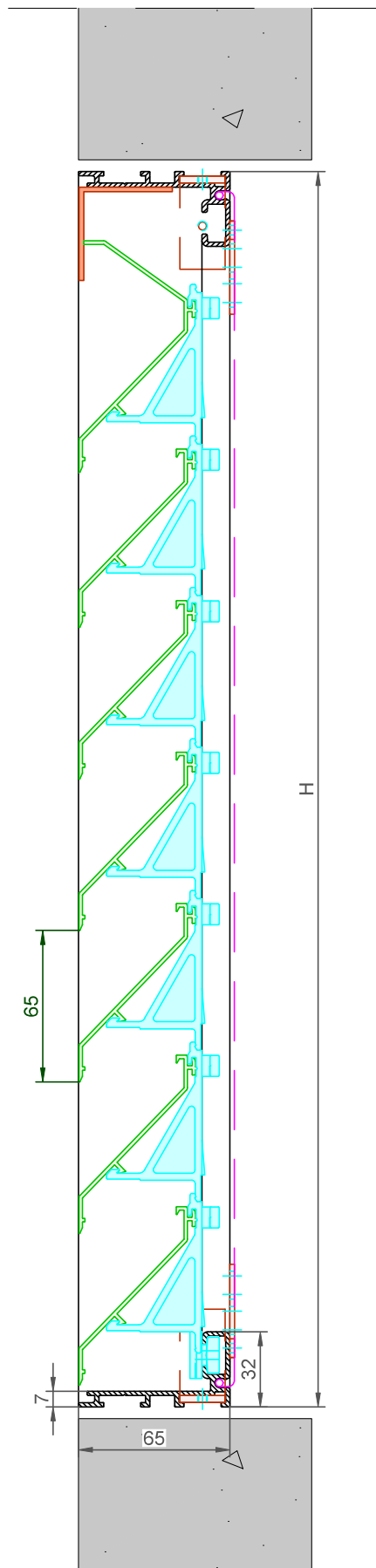
C

B

B

A

A

DucoGrille Classic **N50Z-65**

Datum : 29/08/2022

Schaal : 1:2

DUCO
Ventilation & Sun Control

Bedrijvenlaan 2 - 8630 VEURNE
tel. 0032-58/330066 - fax.0032-58/330067
email: info@duco.eu www.duco.eu

Deze tekening is eigendom van Duco Projects en mag niet gekopieerd
noch getoond worden aan derden zonder schriftelijke toestemming

Tol. : ISO 2768-mK

Getekend : SDN/JHX

Mat. :

Ref nr. :

Formaat : A3



omtrek

gewicht

lakoppervl.

Tekening nr. :

mm

kg/m

dm²/m

DGC-N50Z-65

3

2

1