



5155736A

EN

**Altus RTS**

Short installation guide

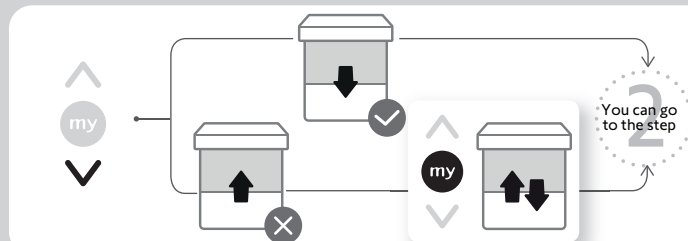
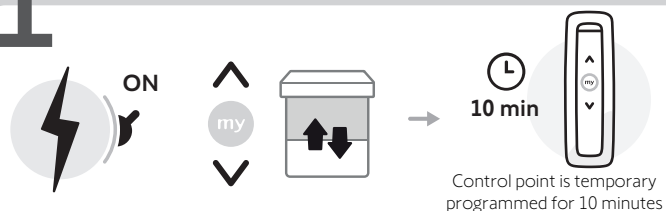
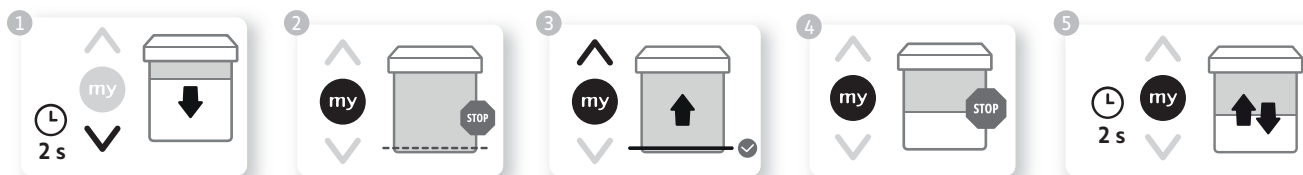
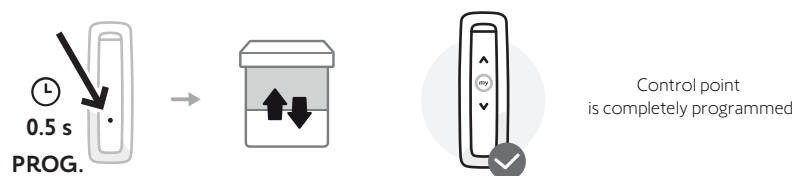
ORIGINAL INSTRUCTIONS

Complete instruction guide available online on [www.somfy.info](http://www.somfy.info)**somfy**From the Application  
"Help me by Somfy"  
scan the QR code  
here to find complete  
setting instructions."Help me by Somfy"  
available on stores

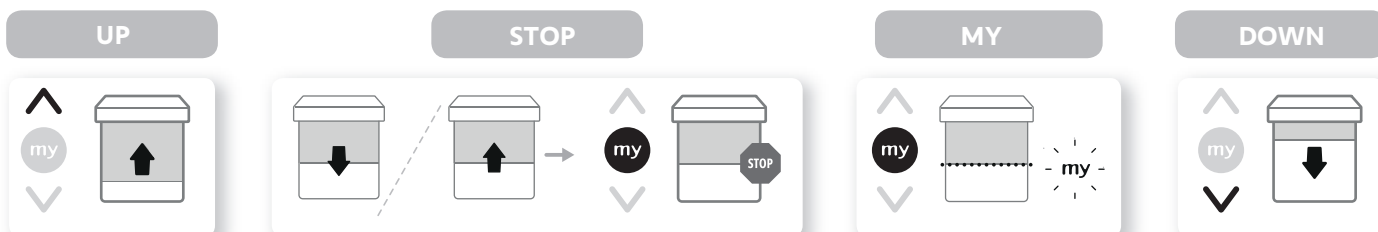
	230 V ~50 Hz	120 V ~60 Hz		
L	Brown	Black		
N	Blue	White		
⏚	Green-Yellow	Green		

**1** PREPROGRAMMING A CONTROL POINT

## DIRECTION OF ROTATION

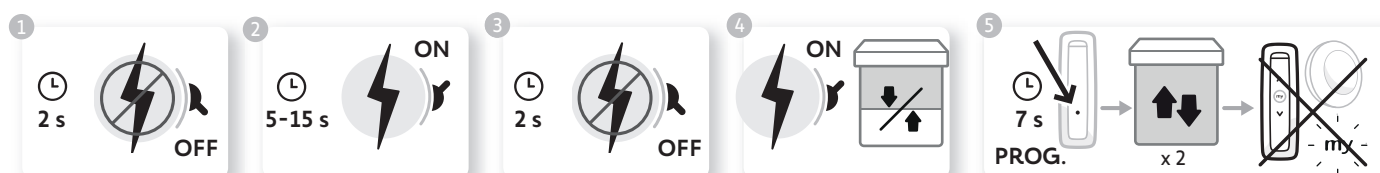
**2** END LIMITS SETTING**3** PAIRING**4** USE

This drive does not require any maintenance operation.

**5** DRIVE RESETTING

⚠ Apply the double cutout only for the end-product to be reset.

This reset deletes all programmed control points, all sensors, all end limit settings and resets the favourite (my) position for the drive.



# INSTRUCTIONS TO BE RESPECTED

These instructions apply to all ALTUS 50 drive, the different versions of which are available in the current catalogue.

## FIELD OF APPLICATION

The ALTUS 50, ALTUS 50 RH, ALTUS 60 drives are designed to drive all types of roller shutters, outdoor awnings without cassette and interior blinds.

The ALTUS 50, ALTUS 50 RH, ALTUS 60 drives are designed to motorise all types of:

- Window roller shutters with stackable slats which curtain can be lifted at least by 4 cm when an upward force of 150 N is applied to the bottom lath positioned at 16 cm from the fully unrolled position.
- Window roller shutter controlled by a control point without locking, installed within sight of closing but away from moving parts and at a height of at least 1.50 m.
- Window roller shutter with an end closure zone located at a height in excess of 1.80 m from the ground or any permanent access level.

If the roller shutter is equipped with openwork slats, a 5 mm diameter rod must not pass through the openings.

- Outdoor awning with or without cassette. All shearing zones shall be protected or inaccessible e.g. at a height  $\geq 2.50$  m from the ground or any other access level. There is no shearing risk with the front rail when e.g. the front rail moves solely by gravity with a mass of less than 15 kg or it is pushed with force less than 150 N.
- External vertical screen which front rail moves solely by gravity with a mass less than 15 kg.
- Interior vertical blinds which front rail moves solely by gravity with a mass less than 15 kg.
- Tiltable venetian blinds which bottom lath can be lifted at least by 4 cm when an upward force of 150 N is applied to the bottom lath positioned at 16 cm from the fully extended position.

## LIABILITY

Please read these instructions carefully before installing and using the drive. In addition to following the instructions given in this guide, the instructions detailed in the attached **Safety instructions** document must also be observed.

The drive must be installed by a motorisation and home automation professional, according to instructions from Somfy and the regulations applicable in the country in which it is commissioned.

It is prohibited to use the drive outside the field of application described above. Such use, and any failure to comply with the instructions given in this guide and in the attached **Safety instructions** document, absolves Somfy of any liability and invalidates the warranty.

The drive must be installed by a professionally qualified person (electrical specialist according to DIN VDE 1000-10) for drives and automations in the building services sector in accordance with the Somfy instructions and the applicable regulations in the country of commissioning.

## SPECIFIC INSTRUCTIONS FOR ASSEMBLY

Altus 50 RTS : interior diameter of the tube has to be  $\varnothing 47$  mm or greater.

Altus 60 RTS : interior diameter of the tube has to be  $\varnothing 63$  mm or greater.

The installer must inform its customers of the operating and maintenance conditions for the drive and must provide them with the instructions for use and maintenance, and the attached **Safety instructions** document, after installing the drive. Any After-Sales Service operation on the drive must be performed by a motorisation and home automation professional.

If in doubt when installing the drive, or to obtain additional information, contact a Somfy adviser or go to the website [www.somfy.com](http://www.somfy.com).

## SAFETY INSTRUCTIONS FOR WIRING



Cables which pass through a metal wall must be protected and isolated using a sheath or sleeve.



Attach cables to prevent any contact with moving parts.



If the drive is used outdoors, and if the power supply cable is a type H05-VVF cable, the cable should be installed in a UV-resistant duct, e.g. under a gland.



Leave the drive power supply cable accessible: it must be possible to replace it easily.



Always make a loop in the power supply cable to prevent water entering the drive.

Frequency bands and Maximum power used

433.050 MHz - 434.790 MHz e.r.p. <10 mW.

Power supply

230 V ~ 50 Hz / 120 V ~ 60 Hz



SOMFY ACTIVITES SA, 74300 CLUSES FRANCE as manufacturer hereby declares that the drive covered by these instructions when marked for input voltage 230V~50Hz and used as intended according to these instructions, is in compliance with the essential requirements of the applicable European Directives and in particular of the Machinery Directive 2006/42/EC, and the Radio Directive 2014/53/EU. The full text of the EU declaration of conformity is available at [www.somfy.com/ce](http://www.somfy.com/ce). Philippe Geoffroy, Approval manager, acting on behalf of Activity director, Cluses, 01/2021.



We care about our environment. Do not dispose of the appliance with usual household waste. Give it to an approved collection point for recycling.