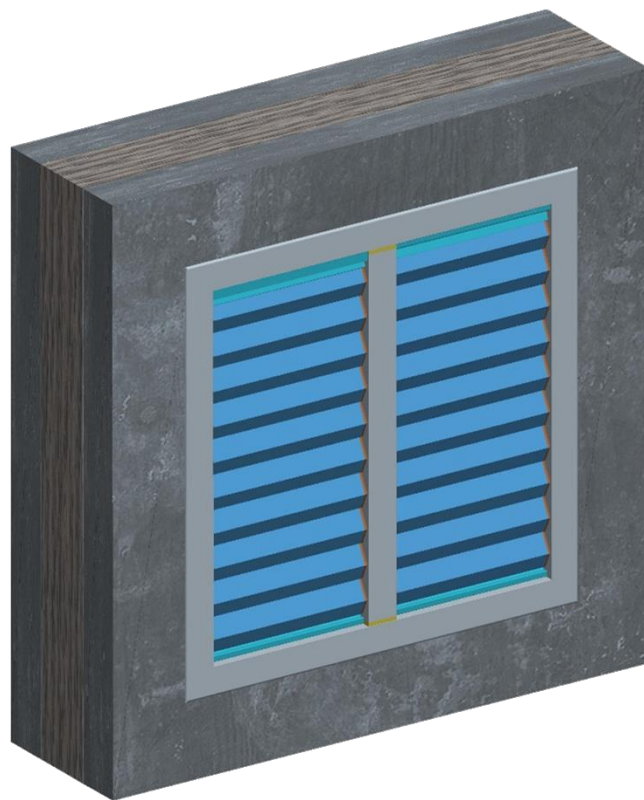


Mounting instructions

DucoGrille Close 35

9/08/2023



CONTENTS

1. Parts list
2. Dimensions
3. Control
4. Mounting

1 Parts list

Fixing lug, DucoClose 35Z+

G0009681



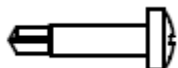
Blind rivet Ø3x6

G0000061



Self-drilling screw 3.5x16 DIN 7504

G0000080



DucoGrille Close 35 is available with different frames and in different sizes:

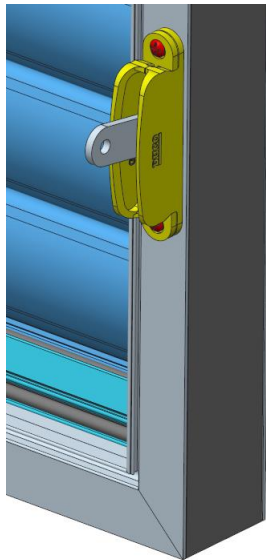
- Width
 - Minimum, per table
 - Per mm
- Height
 - Minimum, per table
 - In 50 mm steps
- Overall dimensions (Width x Height)
 - 3000 x 773.5 mm
 - 800 x 2473.5 mm

For a G grille or an N grille, allow an opening in the wall that is at least 10 mm larger in height and width than the grille.

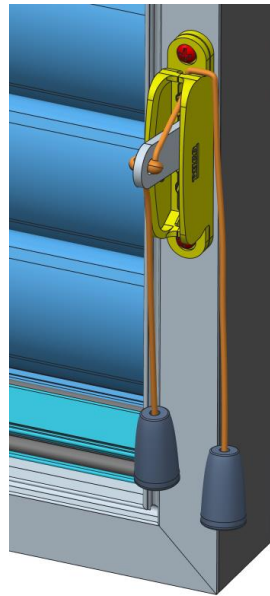
FRAME	TYPE	MINIMUM WIDTH	MINIMUM HEIGHT
F24	Window louvre glass size 24 mm	160 mm	263,5 mm
F28	Window louvre glass size 28 mm	160 mm	263,5 mm
G	Recessed mounting louvre with flange	160 mm	223,5 mm
N	Recessed mounting louvre without flange	160 mm	223,5 mm

DucoGrille Close 35 is available with different controls :

- Side
 - Inside
 - Inside and outside
- Type



Lever



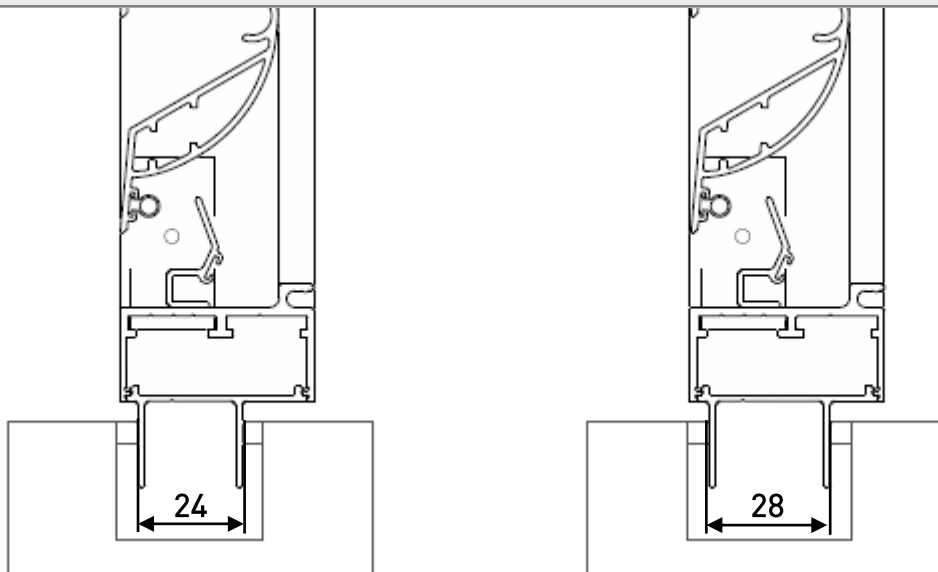
Cord



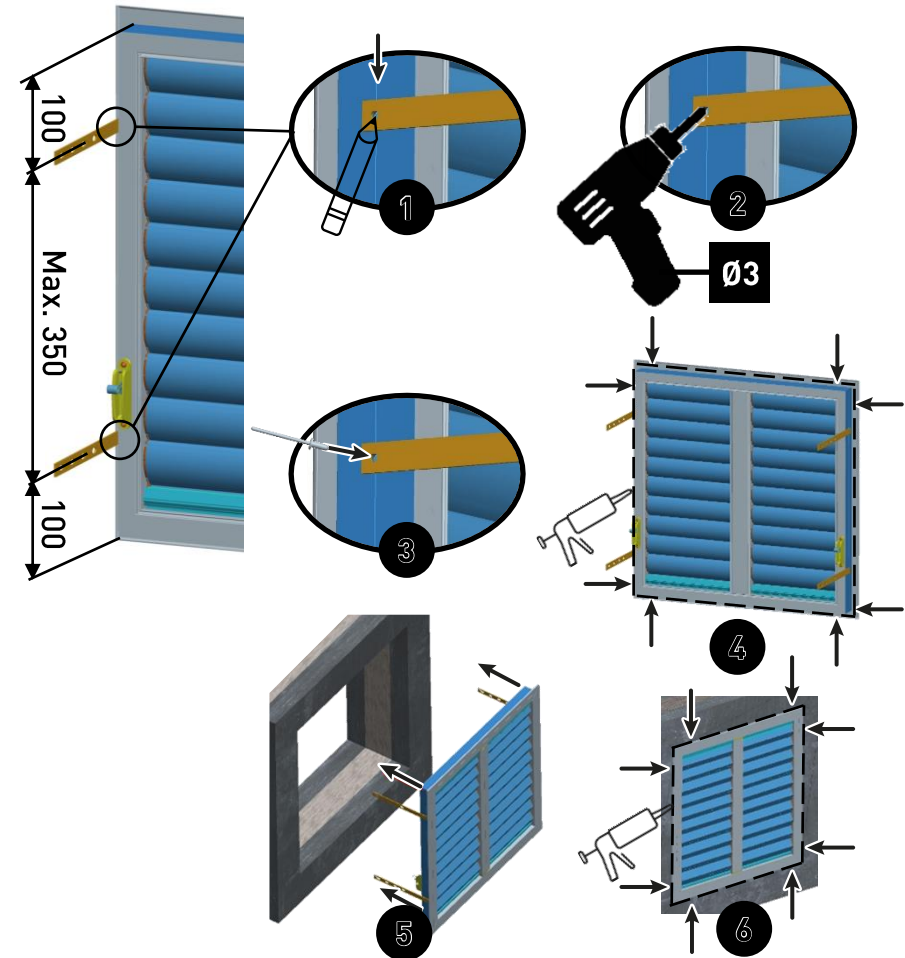
Rod

Mounting a DucoGrille Close 35 is dependent on the frame:

FRAME	TYPE	Mounting	PAGE
F24	Window louvre glass size 24 mm	Replacement for 24 mm glass	5
F28	Window louvre glass size 28 mm	Replacement for 28 mm glass	5
G	Recessed mounting louvre with flange	On exterior wall	6
N	Recessed mounting louvre without flange	On external louvre grille of choice On internal wall (with external louvre grille of choice)	7 8

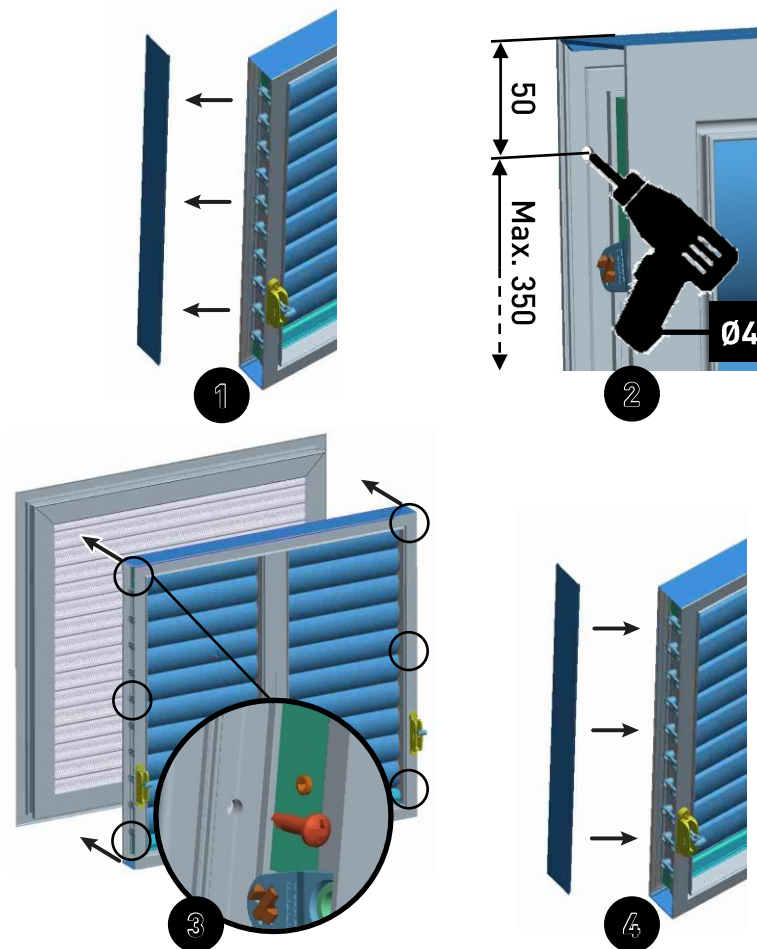


1. Mark the position of the fixing lugs (G0009681) on the sides of the frame in the drilling groove provided:
 - 1 fixing lug per side at 100 mm from the top of the frame
 - 1 fixing lug per side at 100 mm from the bottom of the frame
 - provide additional fixing lugs if the distance between two fixing lugs exceeds 350 mm
2. **NB!** Only drill through the outer frame. Drill $\varnothing 3$ mm holes, 2 mm deep, for fixing the fixing lugs.
3. Fix the fixing lugs using the blind rivets (G0000061).
4. Apply transparent silicone on the inside of the flange.
5. Mount the grille in the opening provided and fix the fixing lugs with an appropriate fastener for the substrate.
6. Apply transparent silicone to the outside of the grille.



For mounting on outer grille of choice

1. **NB!** The cover sections are to be refitted after fixing the grille.
Remove the cover sections on the sides of the frame.
2. **NB!** Drill only on the side mounted against the external louvre grille.
Drill $\varnothing 4$ mm holes in the drilling groove provided:
 - 1 hole per side at 50 mm from the top of the frame
 - 1 hole per side at 50 mm from the bottom of the frame
 - provide additional holes if the distance between two holes exceeds 350 mm
3. Mount the DucoGrille Close 35 on the back of the outer grille and fix with the screws (G0000080).
4. Refit the cover sections on the sides of the frame.
5. Mount the external grille in accordance with the corresponding instructions.



For mounting on internal wall

1. Mount the external grille in accordance with the corresponding instructions.
2. Bend the fixing lugs 90° to get the desired recess depth.
3. Mark the position of the fixing lugs (G0009681) on the sides of the frame in the drilling groove provided:
 - 1 fixing lug per side at 100 mm from the top of the frame
 - 1 fixing lug per side at 100 mm from the bottom of the frame
 - provide additional fixing lugs if the distance between two fixing lugs exceeds 350 mm
4. **NB!** Only drill through the outer frame. Drill $\varnothing 3$ mm holes, 2 mm deep, for fixing the fixing lugs.
5. Fix the fixing lugs using the blind rivets (G0000061).
6. Mount the grille in the opening provided and fix the fixing lugs with an appropriate fastener for the substrate.
7. Finish the interior wall as you choose.

