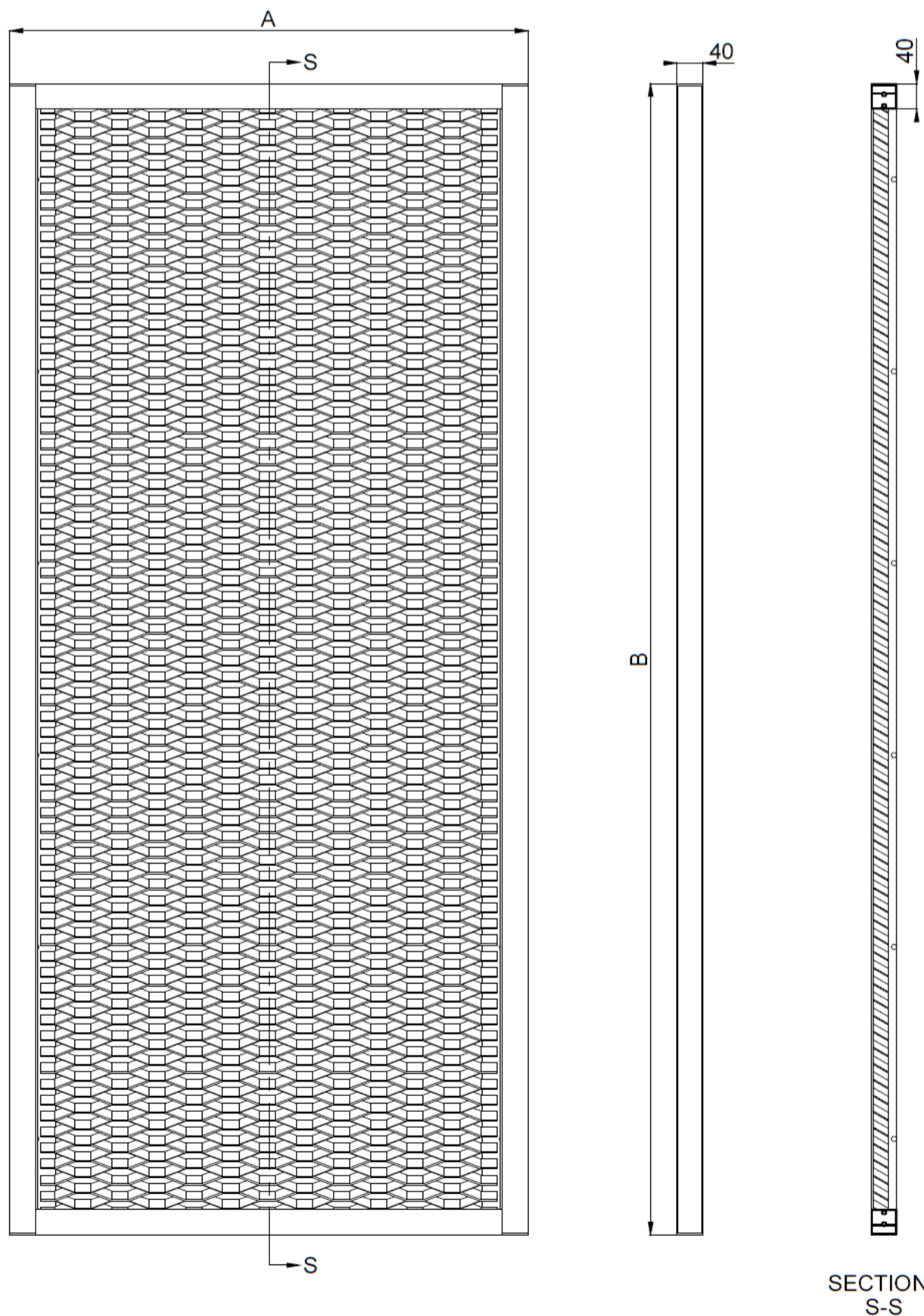
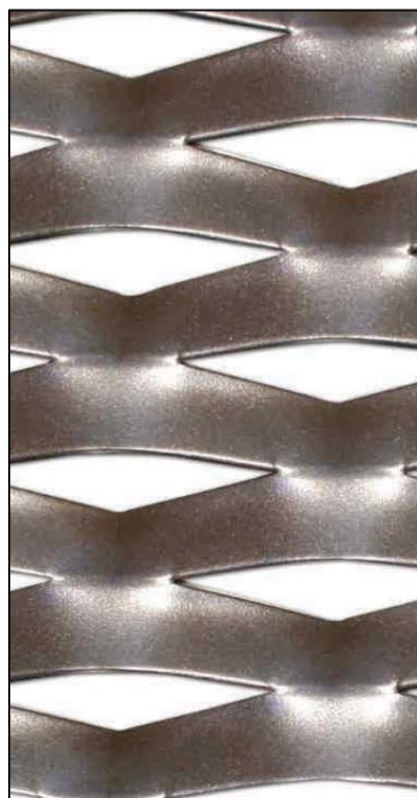


TECHNICAL DATA SHEET



| | |
|-----------------------------------|--|
| TYPE | DUCOSLIDE LUXFRAME 40/40 - stretched metal |
| DESCRIPTION | Permanent external solar shading system with sliding shutters |
| TYPE OF BLADE | Stretched metal |
| MATERIAL | Aluminium |
| TYPE PERFORATION | Andaluz 110L |
| FRAMETYPE (WxH) | 40mm x 40mm |
| MAX. SLIDE WIDTH (800 Pa) | A = 1250mm ↔ B = 2300mm |
| MAX. SLIDE HEIGHT (800 Pa) | A = 500mm ↔ B = 3500mm |
| MATERIAL FRAME | Aluminium : EN AW-6063 T66 |
| SURFACE TREATMENT | Frame: standard natural anodized (15- 20µm) Stretched metal and frame: Polyester powdercoated (60-80µm) |
| COLOURS | All RAL colours |



B: Frame height
A: Frame width