

TECHNICAL DATA SHEET



Type	DucoGrille Classic G 50HP	
DESCRIPTION	Louvre "build-in" wall grille	
SHAPE OF BLADE	50HP	
PITCH	50 mm	
FRAME WIDTH	60 mm	
EQUAL LEG OUTER FRAME	48 mm	
FRAME DEPTH	69 mm	
MIN. DIMENSIONS	Width 250mm, Height 250mm. Exception on request.	
REACTION TO FIRE	If version with standard plastic clips : D-s2,d0 (EN13501-1) If version with metal clips (optional) : A2-s1,d0 (EN 13501-1)	
MESH	<ul style="list-style-type: none"> - standard with insectmesh 2.3 x 2.3 mm - optional without mesh - optional with bird mesh 6 x 6 mm - optional with bird mesh 20 x 20 mm 	
DRIP TRAY PROFILE	extra drip tray on the back of the frame possible as an option	
MATERIAL	Aluminium :	EN AW-6063 T66 (EN 573-3) Profile thickness : min. 1,5mm
	Thermoplastic parts :	Clips Polyamide PA 6,6 -reinforced with glass fibre
	Metal parts :	Clips Zamak Electrophoresis blackened
SURFACE TREATMENT	<ul style="list-style-type: none"> - standard aluminium anodised (15-20µm) according Qualanod - polyester powder coated (60-80µm) according Qualicoat Seaside type A - specific RAL codes and/or textured paint on request 	
VISUAL FREE AREA	88%	
PHYSICAL FREE AREA	68%	
AIR FLOW DATA	(EN13030)	standard
	Ce	0,399
	K-factor intake	6,28
	Cd	0,392
	K-factor exhaust	6,51
WATER RESISTANCE	(EN13030)	standard
	v = 0 m/s	C
	v =0,5 m/s	C
	v = 1 m/s	C
	v = 1.5 m/s	D
	v = 2 m/s	D
	v = 2.5 m/s	D
	v = 3 m/s	D
	v = 3,5 m/s	D

3

2

1

D

D

C

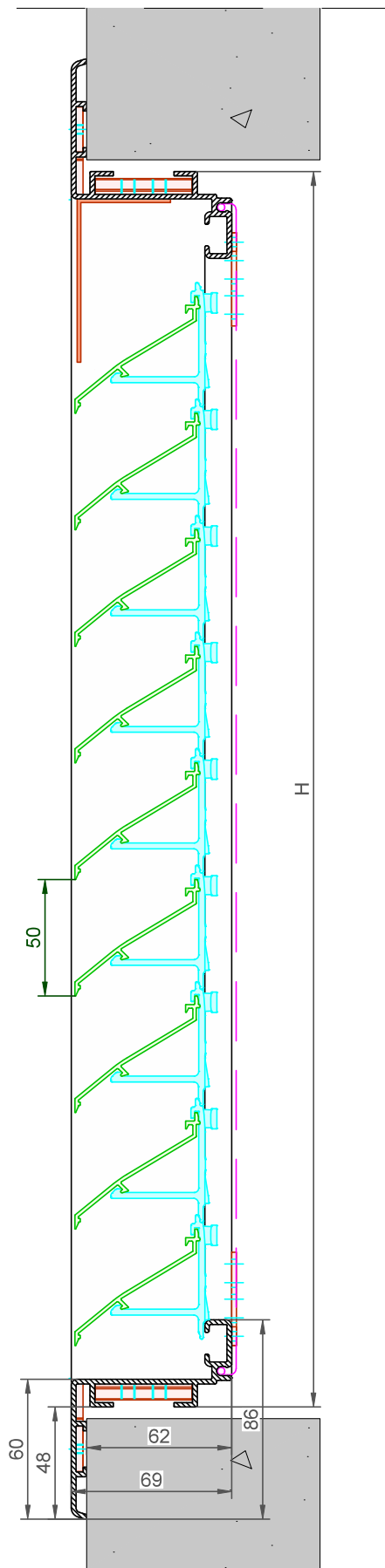
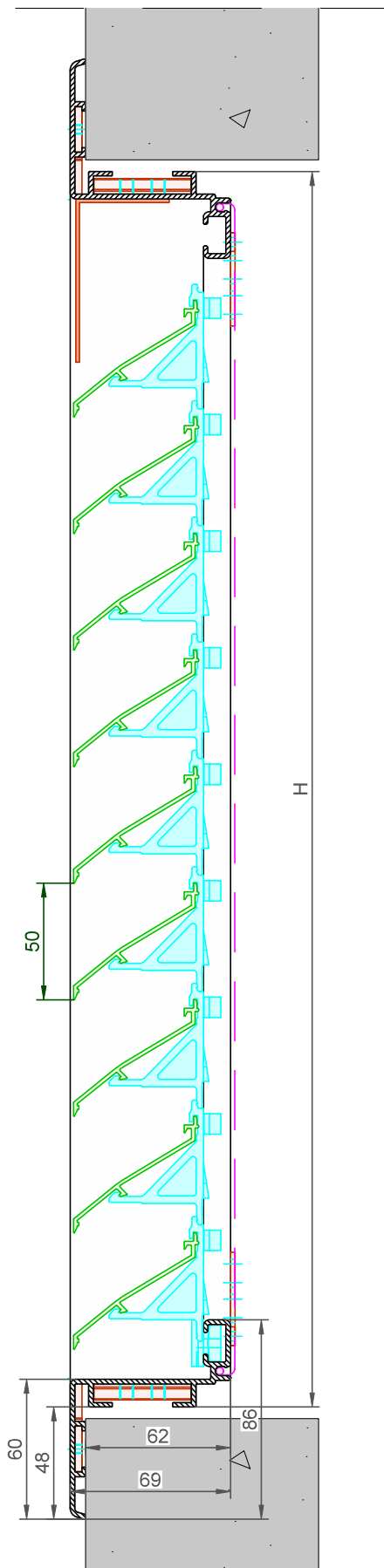
C

B

B

A

A

DucoGrille Classic **G50HP**

Datum : 01/3/2023

Schaal : 1:2

DUCO
Ventilation & Sun Control

Tol. : ISO 2768-mK

Getekend : SDN/LNT/JHX

Mat. :

Ref nr. :

Formaat : A3



omtrek

gewicht

lakoppervl.

Tekening nr. :

Bedrijvenlaan 2 - 8630 VEURNE
tel. 0032-58/330066 - fax.0032-58/330067
email: info@duco.eu www.duco.eu
Deze tekening is eigendom van Duco Projects en mag niet gekopieerd
noch getoond worden aan derden zonder schriftelijke toestemming

DGC-G50HP

Available with : • Standard plastic clip (left)
• Metal clip (right)

3

2

1