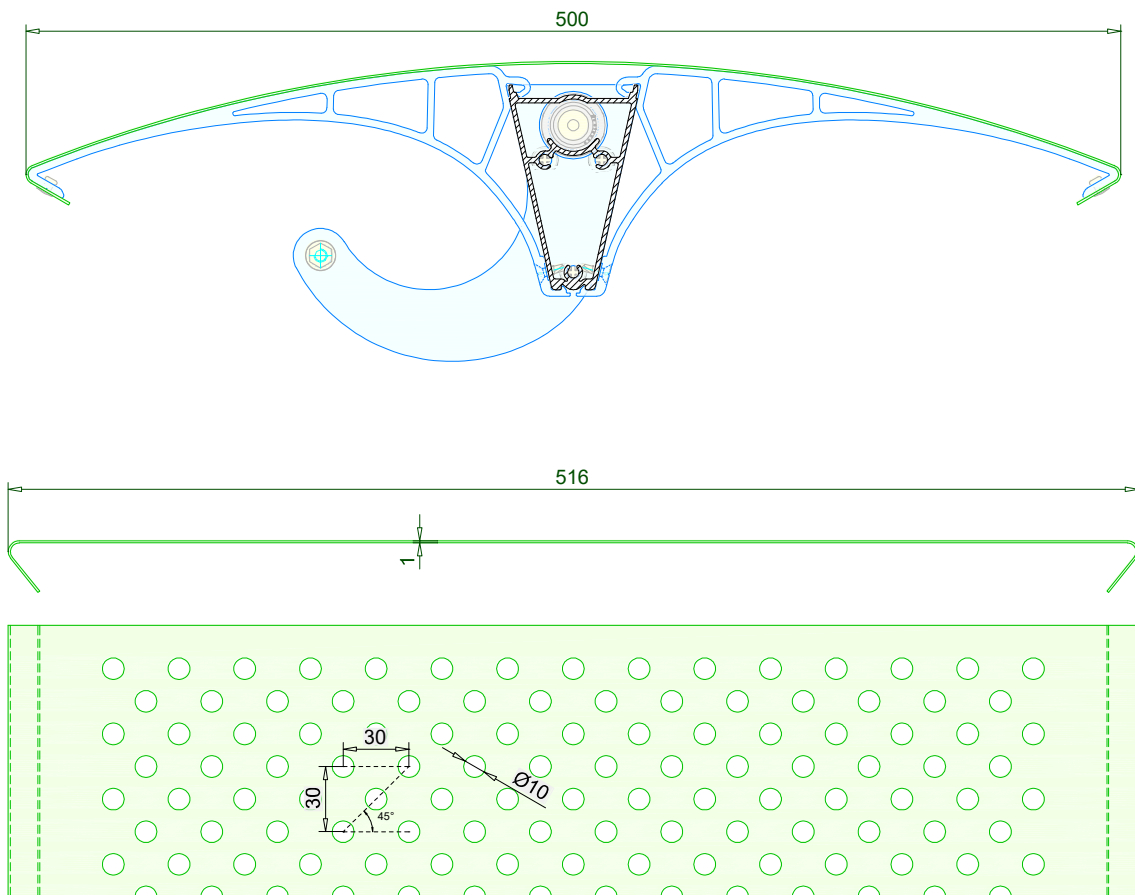


# TECHNICAL DATA SHEET



<b>TYPE</b>	<b>DucoSun Wing 500 - Moveable</b>
<b>DESCRIPTION</b>	External permanent solar shading system with motorized adjustable blades
<b>SHAPE OF BLADE</b>	Perforated fin-shaped louvre blade with central reinforcement profile.
<b>DIMENSIONS</b>	500 mm x 115 mm
<b>PERFORATION</b>	Round Ø10 mm (R10Z30)
<b>MATERIAL</b>	Aluminium : EN AW-6063 T66 (EN 573-3) Profile thickness : min. 1,5 mm / Plate thickness : 1 mm
<b>ANGLE OF BLADE</b>	0° → 90°
<b>PITCH OF BLADE</b>	505 mm
<b>MIN. SYSTEM HEIGHT</b>	1520 mm (determined by motor installation length) If a smaller height is desired, the feasibility must be checked per project.
<b>MAX. SPAN</b>	4250 mm @ 800Pa
<b>COVERPLATES</b>	Aluminium lasered coverplates - thickness 5 mm (AlMgSi0,5)
<b>FIXATION BLADE</b>	Self-tapping countersunk bolt M6x30 DIN7500-MZ (AISI 304)
<b>FIXATION COVERPLATE</b>	Between Duco mullion 60/100
<b>ACTUATOR</b>	Elero - Picolo XL P / IP65 / 230VAC-50Hz / 0,55A / 126W
<b>REACTION TO FIRE</b>	A2-s1,d0 (EN13501-1)
<b>SURFACE TREATMENT</b>	- Polyester powder coated (60-80µm) according Qualicoat Seaside type A



3

2

1

D

D

C

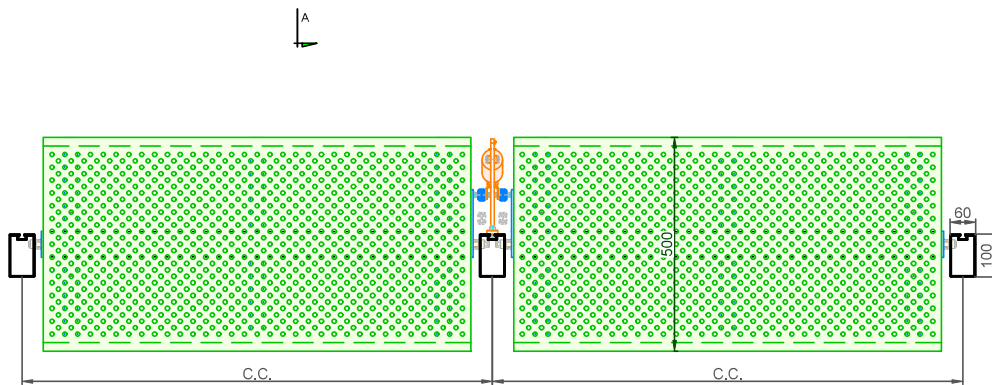
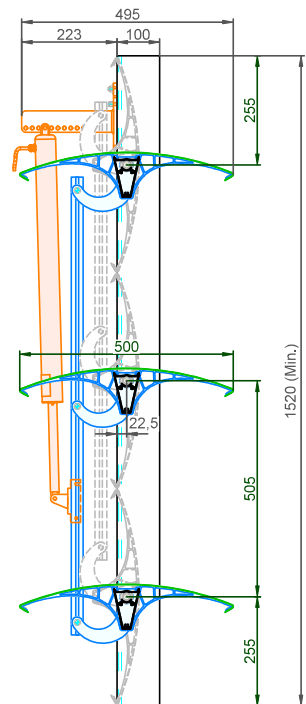
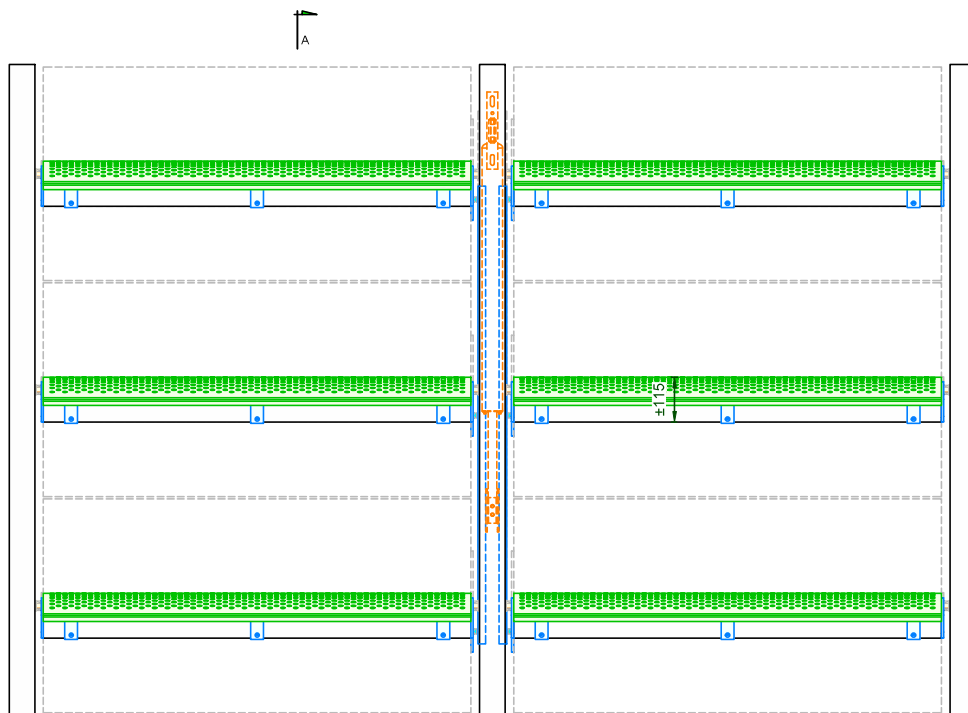
C


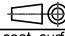
B

B

A

A



DucoSun <b>Wing 500</b> Moveable			Date : 04/07/2024	
 <b>Ventilation &amp; Sun Control</b>			Scale: 1/12,5	
<small>           Bedrijvenlaan 2 - 8630 VEURNE            tel. 0032-58/330066 - fax.0032-58/330067            email: info@duco.eu www.duco.eu            This drawing is the property of Duco Projects NV and cannot be copied or shown to a third party without prior written authorisation from Duco Projects NV.         </small>			Draftsman: JHX	
Tol. : ISO 2768-mK		Ref nr. :		
Mat. :				
Format : A3		Drawing nr. :		
outline:	weight:	coat. surf:	<b>TF_Wing 500_CP-Mo</b>	
mm	kg/m	dm <sup>2</sup> /m		

3

2

1