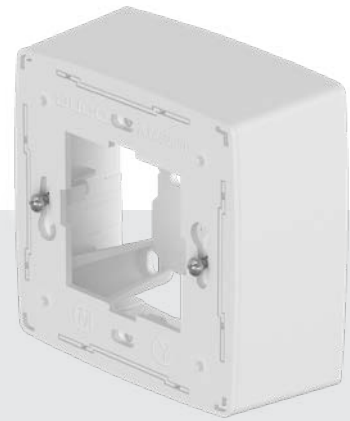


TECHNICAL DATA SHEET

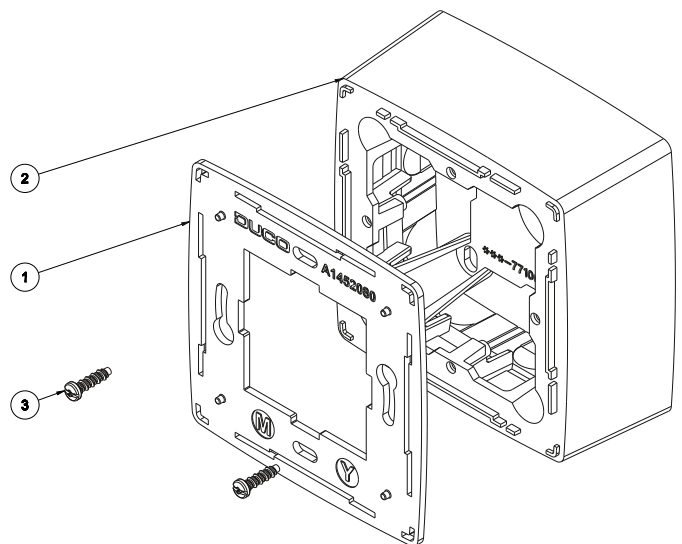
Surface-mounted Box User Controllers / Sensors

Single surface-mounted box for DUCO User Controllers and Sensors. This optional surface-mounted box allows the User Controllers and Sensors to be easily used in situations where recessed mounting is not possible, such as renovation projects or walls with limited depth.

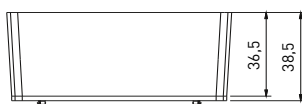
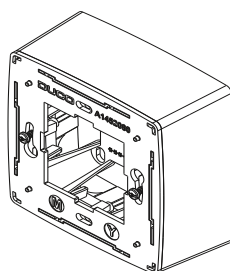
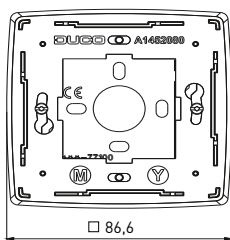


Properties

Item number	0000-5009
Scope of delivery	1 x spacer plate (1) 1 x surface-mounted box (2) 2 x mounting screw for User Controller or Sensor (3)
Dimensions (W x H x L)	Surface-mounted Box: 87 x 87 x 38.5 mm Surface-mounted Box with User Controller or Sensor: 87 x 87 x 59 mm
IP class	Same as used User Controller or Room Sensor
Application	<ul style="list-style-type: none"> DUCO User Controller RF / Wired DUCO Room Sensors
Material	PC + ASA
Colour	White (± RAL 9010)
Weight	60 g
Packaging	Per piece in box



Surface-mounted Box



Surface-mounted box with User controller or room sensor

