

# DucoVent **vents**

Supply and extract vents in standard and aesthetic finishes



Complete range of supply  
and extract vents



Easy installation &  
quick adjustment



From basic to aesthetic  
models to designer vents

**DUCO**

# DucoVent **Comfort**

Smart vent for project construction



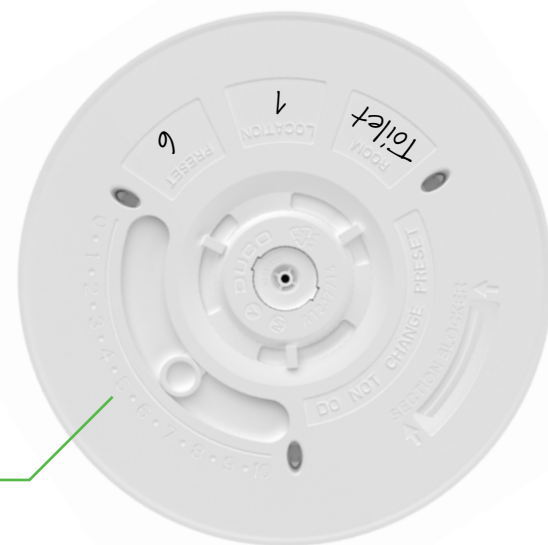
The **DucoVent Comfort** vent is a simple and timeless vent that focuses on both aesthetics and ease of adjustment. It is designed for serial construction projects and can serve as a **supply or extract vent**. The design cover plate can be easily disassembled for adjustment and this can be done before or during installation. Moreover, the end user can remove the vent completely without touching the cover plate: this way the vent is not disrupted.

The adjustment position is further secured by a unique shielding principle of the cover plate. This vent is an ideal addition to the DUCO ventilation systems that use the **copy function** for serial construction. Saving time combined with ease of installation!



Airtight connection thanks to rubber mounting ring

Fine adjustment with 11 adjustment positions



SCAN & DISCOVER



Discover more about the  
**DucoVent Comfort!**

# DucoVent **Design AK**

Aesthetic and functional aluminium vents



The **DucoVent Design AK** is an **aesthetic vent**, available with five different cover plates: Square (standard and XL), Square rounded (standard and XL) or Round. The sleek design, combined with **simple installation** thanks to its magnetic fastening, ensures virtually **invisible** integration into any room where air extraction or supply is provided. The acoustic rings provide optimal **sound reduction** and easy calibration. Suitable for ceiling and wall mounting. **Easy to clean** without disturbing settings.

The DucoVent Design Round **AK** and all XL models are **also suitable for use as supply vents**. Two inserts are included which can be used to reduce the outlet angle, when positioning the vent close to a wall or in a corner.



## Square

DucoVent Design Square **Standard AK**  
(Width 180 x Height 180 x Depth 52 mm)  
(Only suitable as extract vent)

DucoVent Design Square **XL AK**  
(Width 215 x Height 215 x Depth 52 mm)



## Round

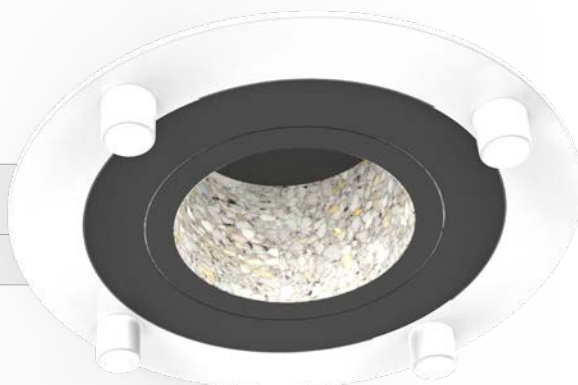
DucoVent Design Round **AK**  
(Diameter 215 x Depth 52 mm)



## Rounded

DucoVent Design Square Rounded **Standard AK**  
(Width 180 x Height 180 x Depth 52 mm)  
(Only suitable as extract diffuser)

DucoVent Design Square Rounded **XL AK**  
(Width 215 x Height 215 x Depth 52 mm)



SCAN & DISCOVER



Discover more about the  
**DucoVent Design AK!**

# DucoVent **Premium Trim**

High-end premium vent

Also as 'trimless' integration



The **DucoVent Premium Trim** is applicable for **both supply and extraction** with a **maximum flow rate of 50 m³/h**.

Thanks to a **minimal mounting height** and **paintable visible parts**, the valve virtually merges into the ceiling. The **thoughtful design** ensures a **diffuse air supply via the Coanda effect** and thus guarantees optimum comfort. Aesthetics and quality in one product! A perfect combination with DUCO's high-quality ventilation solutions!



SCAN & DISCOVER



Discover more  
about the **DucoVent  
Premium Trim!**

## DucoVent **Premium Trimless**

The **DucoVent Premium Trimless** is the design vent par excellence and can be used for **both supply and extraction** with a **maximum flow rate of 50 m³/h**.

A '**trimless**' integration in the **plasterwork** makes the vent virtually invisible. The thoughtful design ensures a **diffuse air supply via the Coanda effect** and thus guarantees optimum comfort. Aesthetics and quality in one product!



SCAN & DISCOVER



Discover more  
about the **DucoVent  
Premium Trimless!**

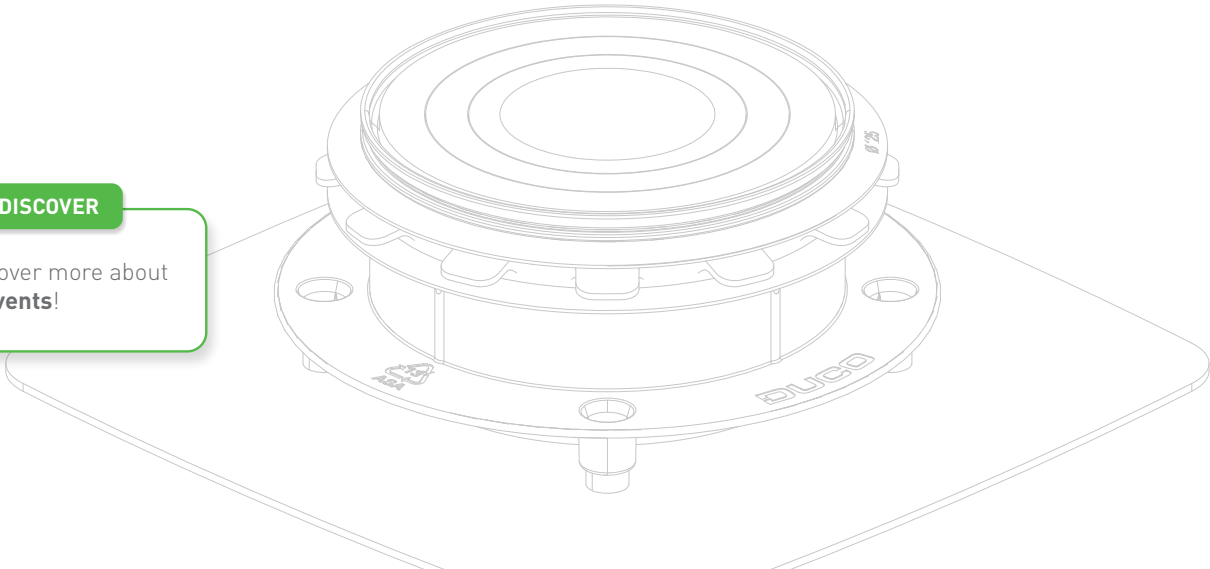
TECHNICAL SPECIFICATIONS

	DucoVent Comfort	DucoVent Design					DucoVent Premium	
		Square Standard	Square XL	Round	Square (rounded) Standard	Square (rounded) XL	Trim	Trimless
Item number	0000-4769	0000-7006	0000-7007	0000-7008	0000-7012	0000-7013	0000-5004	0000-4903
Dimensions (mm)	Ø 190	180 x 180	215 x 215	Ø 215	180 x 180	215 x 215	Ø 145	Ø 108
Mounting height (mm)	24	21	21	21	21	21	1,5	0
Scope of application	Extraction / Supply	Extraction	Extraction / Supply	Extraction / Supply	Extraction	Extraction / Supply	Extraction / Supply	
Connection	Ø 125	Ø 125					Ø 125	
Sealing	Rubber mounting ring	Rubber mounting ring					Rubber mounting ring	
Mounting	Suitable for ceiling and wall 180 cm min. above the floor 35 cm min. from the wall	Suitable for ceiling and wall 180 cm min. above the floor 35 cm min. from the wall					Suitable for ceiling and wall 180 cm min. above the floor 35 cm min. from the wall	
Maximum flow rate supply	75 m³/h	50 m³/h					50 m³/h	
Maximum flow rate extraction	75 m³/h	75 m³/h					50 m³/h	
Adjustment	11 adjustment positions	Pre-adjustment: via acoustic rings Fine adjustment: continuous with spindle					34 adjustment positions	32 adjustment positions
Material	Plastic   Rubber	Plastic   Rubber Aluminium (Al Mg Si 0.5)   Composite foam D100					Plastic   Rubber	
Colour	White	White (RAL 9010 texture (AE03059901020)) Other RAL colours upon request					White (visible parts can be painted over with a synthetic primer)	
Weight (g)	305	362	419	381	356	413	140	280

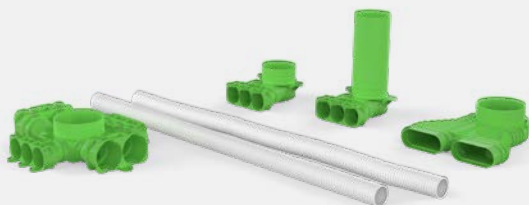
SCAN & DISCOVER



Discover more about  
our **vents**!



## DUCOFLEX



- Complete **air ducting system** for MEV and MVHR systems
- Convenient '**Click & Go**' principle
- Limited number of accessories required

**Discover more about DucoFlex**



## Catalogue



The user-friendly catalogue guides you quickly and easily through DUCO's ventilation systems and associated components.

**Download the catalogue**



## 100 % HASSLE-FREE?

**Send us your project!**

DUCO offers project supervision from A to Z. Send us your project and receive a no-obligation proposal with material requirements (incl. ventilation boxes, control components, air ducting and accessories).



[www.duco.eu/yourproject](http://www.duco.eu/yourproject)

# DUCO